

**Site Inquiry**

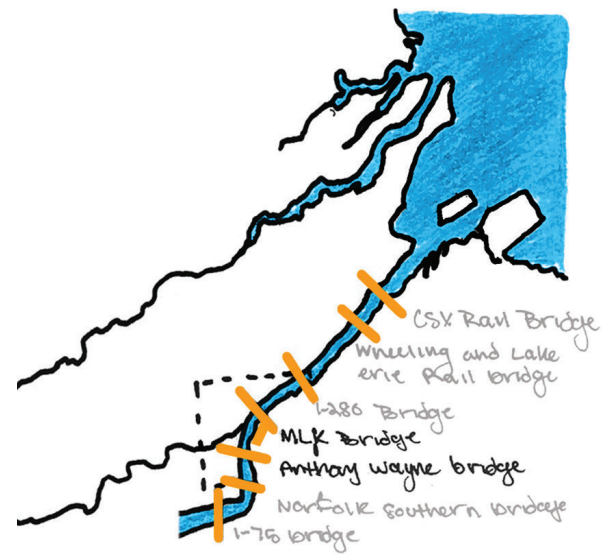


The chosen site for this project sits parallel to Riverside Drive road, along a half-mile stretch of the Maumee riverfront in downtown Toledo, Ohio. The site was historically an industrial park with factories along the bank of the river. Today the site sits motionless, despite its extraordinary possibilities. This is the ideal location to bring educational and urban opportunity to East Toledo and the broader region.

**Urban Condition**

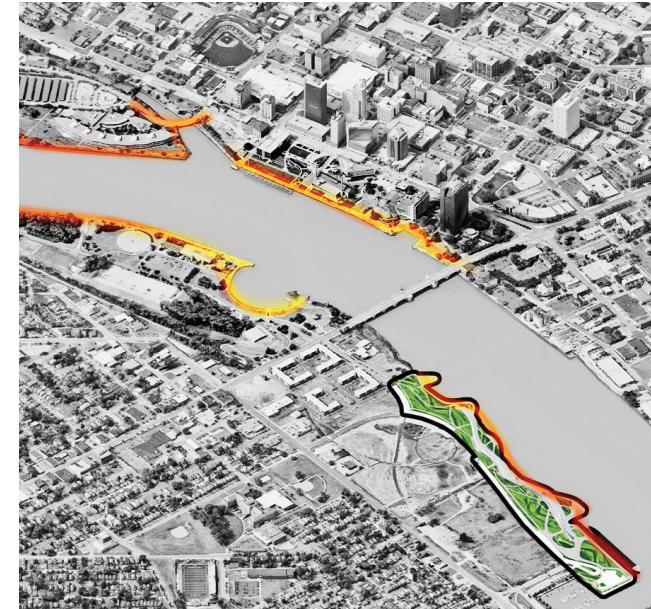
Toledo is divided along the banks of the Maumee River, East and West. West Toledo has historically seen investment in infrastructure, architecture, and public parks. East Toledo, an area of low-density urban sprawl, on the other hand has been historically neglected. The outright neglect of East Toledo is observable in the condition of the built environment, but also socially, culturally, and economically. The River has the possibility to either divide or connect and in the case of Toledo, it has historically been the dividing factor. The proposed museum, called The Bridge, is a revitalization of the riverfront connection to East Toledo, providing new educational experiences through the community center and maritime museum.

E. W. Connections Along Maumee River



**Toledo, Ohio**  
Toledo Macro

**The Bridge 2023**



- 1. Riverfront Engagement
- 2. Developed Urban Condition
- 3. Waterway Traffic Route

Maumee River



 Scale: 1/400" = 1'  
Site Selection >