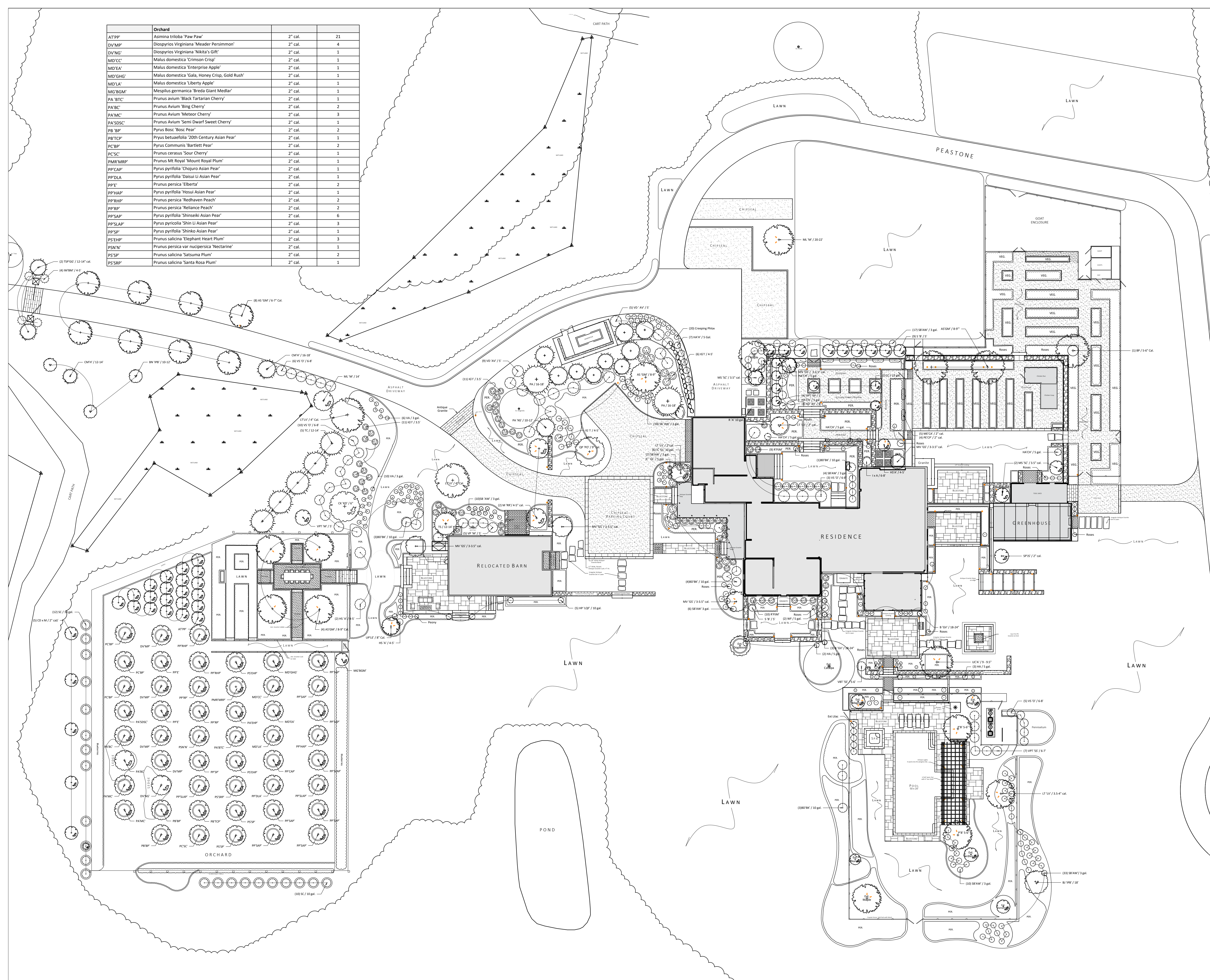


# Carlisle Farm House

Orchard			
Code	Botanical Name	Size	Quantity
ATPP	Asimina triloba 'Paw Paw'	2' cal.	21
DVMP	Diospyros Virginiana 'Meader Persimmon'	2' cal.	4
DVNG	Diospyros Virginiana 'Nikita's Gift'	2' cal.	1
MDCC	Malus domestica 'Crimson Crisp'	2' cal.	1
MDCA	Malus domestica 'Enterprise Apple'	2' cal.	1
MDGH	Malus domestica 'Gala, Honey Crisp, Gold Rush'	2' cal.	1
MDLA	Malus domestica 'Liberty Apple'	2' cal.	1
MCBGM	Mespilus germanica 'Breda Giant Medlar'	2' cal.	1
PABTC	Prunus avium 'Black Tartarian Cherry'	2' cal.	1
PAIC	Prunus avium 'Bing Cherry'	2' cal.	2
PAMC	Prunus avium 'Meteor Cherry'	2' cal.	3
PASSDC	Prunus avium 'Semi Dwarf Sweet Cherry'	2' cal.	1
PB BP	Pyrus Bosc 'Bosc Pear'	2' cal.	2
PBTCP	Pyrus betulaefolia '20th Century Asian Pear'	2' cal.	1
PCBP	Pyrus Communis 'Bartlett Pear'	2' cal.	2
PCSC	Prunus cerasus 'Sour Cherry'	2' cal.	1
PMRMRP	Prunus Mt Royal 'Mount Royal Plum'	2' cal.	1
PPCAP	Pyrus pyrifolia 'Chojuro Asian Pear'	2' cal.	1
PPDLA	Pyrus pyrifolia 'Daisui Li Asian Pear'	2' cal.	1
PPE	Prunus persica 'Eliberta'	2' cal.	2
PPHAP	Pyrus pyrifolia 'Hosui Asian Pear'	2' cal.	1
PPHNP	Prunus persica 'Redhaven Peach'	2' cal.	2
PPRP	Prunus persica 'Reliance Peach'	2' cal.	2
PPSAP	Pyrus pyrifolia 'Shinsei Asian Pear'	2' cal.	6
PPSLAP	Pyrus pyrifolia 'Shim Li Asian Pear'	2' cal.	3
PPSP	Pyrus pyrifolia 'Shinko Asian Pear'	2' cal.	1
PSEHP	Prunus salicina 'Elephant Heart Plum'	2' cal.	3
PSNV	Prunus persica var nuspersica 'Nectarine'	2' cal.	1
PSSP	Prunus salicina 'Satsuma Plum'	2' cal.	2
PSRBP	Prunus salicina 'Santa Rosa Plum'	2' cal.	1



Plant List			
Key	Botanical Name	Size	Quantity
<b>Trees</b>			
ASGM	Acer saccharum 'Green Mountain'	5-6'	5
ASGM	Acer saccharum 'Green Mountain'	6-7'	8
ASGM	Acer saccharum 'Green Mountain'	8-9'	4
BN RB	Betula nigra 'River Birch'	10-12'	1
BUPP	Betula Jacquemontii 'Indian Paper Birch'	18'	1
DCMCH	Castanea dentata x mollissima 'Hybrid Chestnut'	2' cal.	1
CCER	Cercis canadensis 'Eastern Redbud'	15 gal.	1
CMH	Conium maculatum 'Hemlock'	12-14'	1
CMH	Conium maculatum 'Hemlock'	14-16'	1
CMH	Conium maculatum 'Hemlock'	16-18'	1
CKKD	Corus kousa 'Kousa Dogwood'	6"	1
LT'LV	Liriodendron tulipifera 'Little Volunteer'	3.5 - 4'	2
LT'LV	Liriodendron tulipifera 'Little Volunteer'	10' cal.	1
MVGS	Magnolia virginiana 'Green Shadow'	3 - 3.5'	2
MLM	Magnolia x loebneri 'Merrill'	14'	1
MLM	Magnolia x loebneri 'Merrill'	20 - 22'	1
MECA	Malus Espalier 'Climbing Apple'	2' cal.	9
MRR	Malus 'Royal Raindrops'	4.5'	2
MSSC	Malus sargentii 'Sargent Crabapple'	2.5'	3
PANS	Picea abies 'Norway Spruce'	12-14'	3
PANS	Picea abies 'Norway Spruce'	10-12'	6
PANS	Picea abies 'Norway Spruce'	16-18'	1
PIB	Platanus acerifolia 'Bloodgood'	5-6'	2
PYSY	Prunus yedoensis 'Shidare Yoshino'	4.5'	1
PECP	Pyrus Espalier 'Climbing Pear'	2' cal.	4
QPPO	Quercus palustris 'Pin Oak'	9"	1
SPJS	Stewartia pseudocamellia 'Japanese Stewartia'	2' cal.	1
TSPGG	Thuja standishi x plicata 'Green Giant'	12-14'	2
TC'EH	Tsuga canadensis 'Eastern Hemlock'	12-14'	5
TC'EH	Tsuga canadensis 'Eastern Hemlock'	14-16'	1
LUCA	Ulmus carpinifolia 'Accolade'	9 - 9.5'	1
UPLF	Ulmus parvifolia 'Lacebark Elm'	8' cal.	1
<b>Shrubs</b>			
BD'BA	Buddleja davidii 'Black Knight'	10 gal.	1
BD'M	Buddleja davidii 'Magenta'	10 gal.	9
B'GV	Buxus x 'Green Velvet'	18 - 24"	1
CDEA	Calliargis dichotoma 'Early Amethyst'	5 gal.	2
CCDN	Caryopteris x glandonensis 'Dark Night'	8 gal.	15
HD	Hamamelis x 'Blanc'	5-6'	4
HS'A	Hibiscus syriacus 'Aspersion'	4.5'	1
HA'CR	Hydrangea anomala 'Climbing Hydrangea'	5 gal.	7
HP'LOF	Hydrangea paniculata 'L'OP'	10 gal.	5
IC'GL	Ilex crenata 'Green Lustre'	10 gal.	5
IC'GL	Ilex crenata 'Green Lustre'	5 gal.	19
IC'H	Ilex crenata 'Heller'	3 gal.	9
IGY	Ilex glabra 'Inkberry'	3.5'	22
IBMB	Ilex meserveae 'Blue Maid'	4.5'	4
LA'AM	Ilex x aquifolium 'Aquifem Holly'	6-8'	1
IMP	Myrica pensylvanica 'Bayberry'	3 gal.	18
PL'CP	Paeonia lactiflora 'Common Peony'	10 gal.	2
R'A	Rhododendron 'Aglo'	7 gal.	10
R'PM	Rhododendron 'PJM'	15 gal.	7
R'PM	Rhododendron 'PJM'	10 gal.	4
R'RE	Rhododendron 'Roseum Elegans'	15 gal.	2
SC'E	Sambucus canadensis 'Elderberry'	10 gal.	1
SB'AW	Spiraea bumalda 'Anthony Waterer'	3 gal.	22
S'B	Syringa 'Bloomerange'	5'	9
S'B	Syringa 'Bloomerange'	7 gal.	9
SH'OG	Syringa x hyacinthiflora 'Old Blush'	6"	1
VA 'LB	Vaccinium angustifolium 'Lowbush Blueberry'	3 gal.	1
VD'AV	Viburnum dentatum 'Arrowwood Viburnum'	5"	9
VPTM	Viburnum plicatum tomentosum 'Summer Snowflake'	6-7'	5
VS'O	Viburnum sargentii 'Omondaga'	6-8'	10
WFE	Weigelia Florida 'Weigelia'	3 gal.	2
<b>Perennials</b>			
AR	Ajuga reptans	1 gal.	1
AM	Alchemilla mollis	1 gal.	3
AHSC	Anemone x hybrida 'September Charm'	1 gal.	15
AG	Angelica gigas	1 gal.	2
AC	Astilbe chinensis	2 gal.	7
C'JS	Clematis 'Jackmanii Superba'	5 gal.	3
CV	Coreopsis verticillata	1 gal.	1
DE'GB	Delphinium elatum 'Guardian Blue'	9"	18
DE'GL	Delphinium elatum 'Guardian Lavender'	9"	7
EP	Echinacea purpurea	9"	15
EG	Evolvulus glomeratus	1 gal.	12
GR'	Geranium x 'Rozanne'	1 gal.	25
HS'	Hemerocallis x 'Stella D' Oro'	1 gal.	4
HP	Hydrangea petiolaris	7 gal.	7
LH	Lonicera x heckerotii	2 gal.	3
M'SA	Miscanthus sinensis 'Adagio'	2 gal.	2
NB	Nepeta racemosa	9"	25
PA'BB	Paeonia x lactiflora 'Bowl of Beauty'	2 gal.	5
PL'SB	Paeonia x lactiflora 'Sarah Bernhardt'	2 gal.	10
PV'S	Panicum virgatum 'Shenandoah'	2 gal.	30
PA'H	Pennisetum alopecuroides 'Haven'	1 gal.	1
PN	Papaver nudicaule	9"	10
R'V	Rhubarb 'Victoria'	1 gal.	25
R'A	Rosa 'America'	3 gal.	2
R'AD	Rosa 'Apricot Drift'	3 gal.	2
R'IF	Rosa 'Rosa'	3 gal.	2
R'BE	Rosa 'Buff's Eye'	3 gal.	1
R'CP	Rosa 'Chicago Peace'	3 gal.	1
R'CD	Rosa 'Coral Drift'	3 gal.	5
R'CK	Rosa 'Cupid's Kisses'	3 gal.	1
R'DPK	Rosa 'Double Pink Knock Out'	3 gal.	4
R'DRM	Rosa 'Double Red Knock Out'	3 gal.	5
R'FJ	Rosa 'Fourth of July'	3 gal.	1
R'GG	Rosa 'Generous Gardener'	3 gal.	2
R'GS	Rosa 'Golden Showers'	3 gal.	1
R'GSC	Rosa 'Golden Showers Climbing'	3 gal.	1
R'H	Rosa 'Homenum'	3 gal.	3
R'PD	Rosa 'Pink Drift'	3 gal.	1
R'RD	Rosa 'Red Drift'	3 gal.	5
R'RD	Rosa 'Red Drift'	5 gal.	2
R'SKO	Rosa 'Sunny Knock Out'	3 gal.	3
R'SD	Rosa 'Sweet Drift'	3 gal.	1
RL	Rudbeckia laciniata	9"	5
SN	Salvia nemorosa	9"	10
SP	Syringa patula	5-6'	5
TA	Thalictrum aquilegifolium	2 gal.	8
VB	Verbena bonariensis	1 gal.	3
<b>Annuals</b>			
DG	Dahlia Giant	10"	11
M'GP	Mandevilla x Giant Pink	12"	5
M'DT	Mangold 'Durango Tangerine'	10"	10
M'DY	Mangold 'Durango Yellow'	10"	10

1"=20'-0" 0 5 10 20 40

