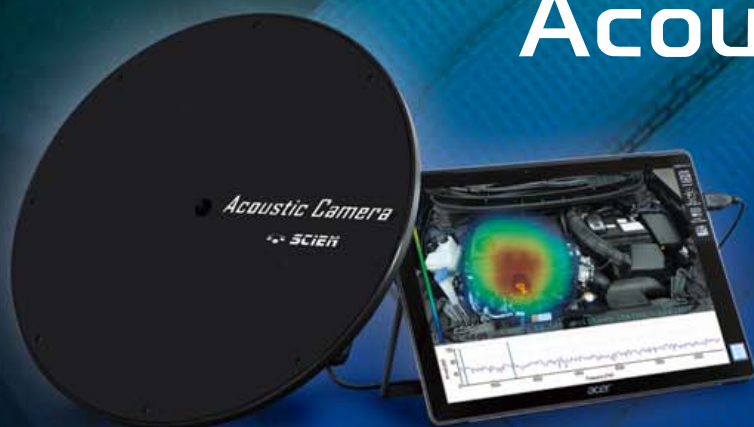




Easy × Light × Compact × Visualization

Acoustic Camera

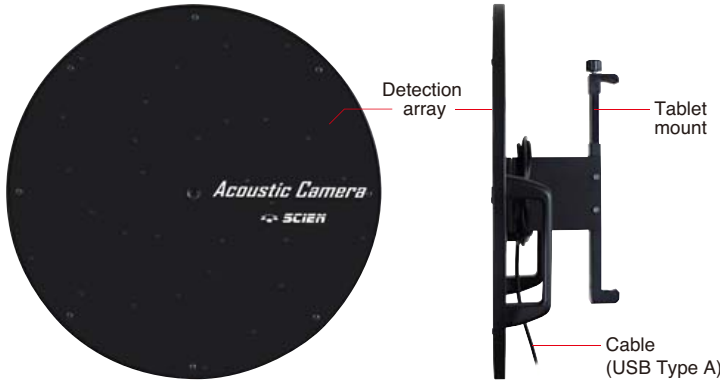


This innovative portable system combines a 30-microphone array with a tablet computer to enable visualization of sound sources.

Possible applications include product development and on-site troubleshooting. Problematic sound sources can be quickly located, and the efficiency of countermeasures can be checked visually.

Features

- Integrated system comprising a tablet computer and detection array realizes a compact and affordable system. (Power is supplied from the tablet computer. No separate power source is required.)
- Supports real-time display of FFT analysis results and narrowing down target sound sources by frequency band selection based on analysis results.
- Display of sound pressure level and FFT analysis results for a specific location.
- Supports detection of transient noise sources through high speed mode, averaging function, and trigger detection function.
- Supports video capture and store during measurement (automatic recording of sound events possible, including sound signal)



Detection method Acoustic beam forming and high-speed image processing enable sound source visualization in real time.

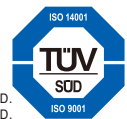
Specifications

Measurement frequency range	400 Hz to 10 kHz
Measurement level range	35 dB to 120 dB
Minimum measurement distance	0.2 m
Number of microphones	30
Integrated camera	1
Frame rate	25 frames / second (high-speed mode)
Recording functions	Manual, Auto (Sound Event Setting, Pre-recording function), MP4
Ambient conditions for operation	Between -10°C and +40°C, max. 90% RH
Dimensions and weight	Detection array: 360 mm (Ø) x 11.6 mm (D), approx. 1.6 kg
Display language	English
Compatible tablet models	Surface Pro 6, 7 (Microsoft Windows 10 Pro 64 bit)
Product configuration	Detection array, tablet, connecting cable (for connection of detection array and tablet), carrying case

SCIEN This system is a product of SCIEN CO., LTD (South Korea)



RIION CO., LTD. is recognized by the JCSS which uses ISO/IEC 17025 as an accreditation standard and bases its accreditation scheme on ISO/IEC 17011. JCSS is operated by the accreditation body (IA Japan) which is a signatory to the Asia Pacific Accreditation Cooperation (APAC) as well as the International Laboratory Accreditation Cooperation (ILAC). The Quality Assurance Section of RIION CO., LTD. is an international MRA compliant JCSS operator with the accreditation number JCSS 0197.

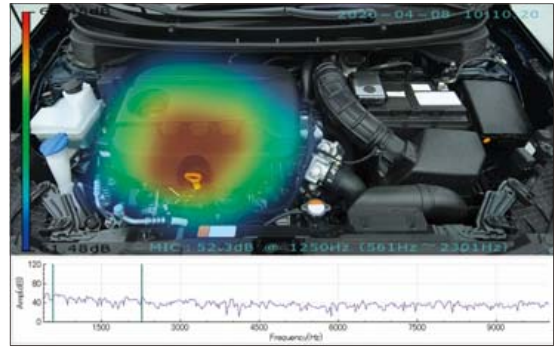


ISO 14001 RIION CO., LTD.
ISO 9 001 RIION CO., LTD.

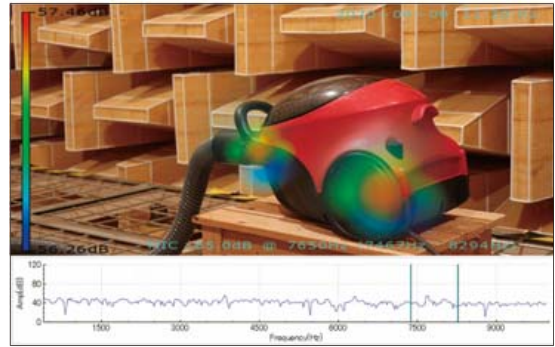
* Windows is a trademark of Microsoft Corporation. * Specifications subject to change without notice.

Distributed by:

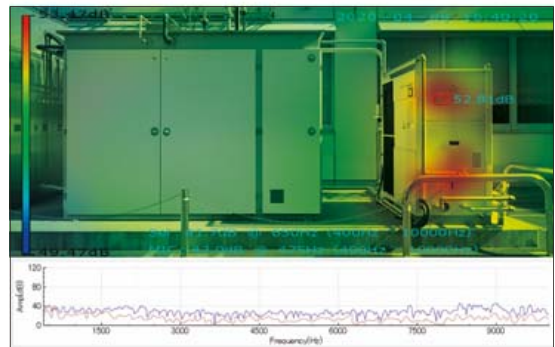
Measurement screen examples (simulated)



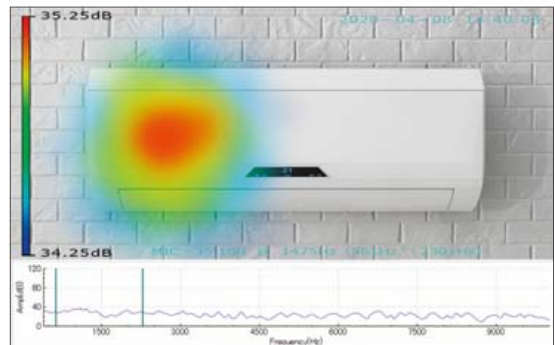
Engine compartment



Vacuum cleaner



Water purification equipment



Air conditioning room unit (abnormal noise)

RIION CO., LTD.
<https://rion-sv.com/>

3-20-41, Higashimotomachi, Kokubunji, Tokyo 185-8533, Japan
Tel: +81-42-359-7888 Fax: +81-42-359-7442